

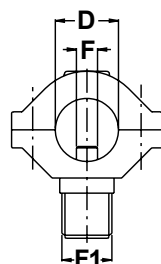
Portaugello completo di O-ring di tenuta e testina filettata colore rosso.

Nozzle holder with O-ring seal and red coloured threaded cap.

Форсункодержатель с уплотнительным кольцом и резьбовым красным колпачком.

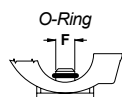


DIMENSIONS



Part No.	F1	F mm	D	bar	Pack
8230012	G 3/8 M	7	1/2"	20	25

SPARE PARTS



Part No.	F mm	Pack
G00001006	7	50

OPTIONALS



Pag. 254-255



Pag. 262-290



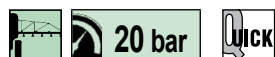
Part No.	Pack
K00001000	10

Kit vite di fissaggio.
Screw kit.
Комплект крепежного винта.

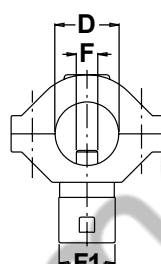
Portaugello completo di O-ring di tenuta. Attacco rapido (testina non inclusa).

Nozzle holder with O-ring seal. Quick fitting (cap not included).

Форсункодержатель с уплотнительным кольцом. Фитинг быстрого подключения (без головки).

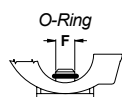


DIMENSIONS



Part No.	F1	F mm	D mm	bar	Pack
8230013	QUICK	7	1/2"	20	25

SPARE PARTS



Part No.	F mm	Pack
G00001006	7	50

OPTIONALS



Pag. 254-255



Pag. 262-290



Part No.	Pack
K00001000	10

Kit vite di fissaggio.
Screw kit.
Комплект крепежного винта.

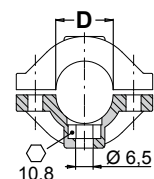
Morsetto con battuta piana

Flat seat clamp

Зажим с плоской посадочной поверхностью



DIMENSIONS



Part No.	D	Pack
8294013	1/2"	
8294027	3/4"	25
8294026	1"	

OPTIONALS



Part No.	Pack
K00001000	10

Kit vite di fissaggio.
Screw kit.
Комплект крепежного винта.